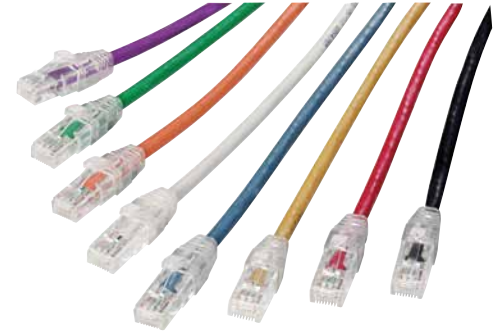


PowerCat 6 U/UTP Patch Cord



Molex PowerCat 6 U/UTP Patch Cords are key components of PowerCat 6 U/UTP End-to-End Solution and are designed to support data networks for 10/100BASE-T and 1000BASE-T applications.

The patch cable is made from high quality four pair 24 AWG stranded copper wire. Available in a range of colors and lengths, PowerCat 6 patch cords are preterminated with RJ45 plugs and feature anti-snap slim strain relief slip on boots.



Features and Advantages

4 pair 24 AWG stranded copper wire

Pre-terminated with WE8W plugs

Slim clear anti-snap slip on boots

Suitable for EIA 568A or 568B wiring

LSOH sheath

RoHS Compliant

Specifications

COMMERCIAL STANDARDS

ISO/IEC 11801:2002/Amd 2:2010
Cat 6-, TIA-568.2-D Cat 6,
EN 50173-1:2011 Class E,
ETL Verified

FIRE PROPAGATION TESTS

LSOH Sheath: CSA FT1, IEC 60332-1,
IEC 61034

MECHANICAL

Cable
Conductor size: 24 AWG stranded
copper wire
Nom. O.D.: 5.9mm
Sheath: LSOH
Bend radius: 4X O.D.
Operating temperature range: -25°C to +55°C

Plug

MIN operating life: 750 insertion cycles
RJ45 plug and boot material: Clear polycarbonate
Contact material: 0.35mm thick copper alloy
Contact plating: Selective gold
RJ45 plug dimensions compliant with:
ISO/IEC 60603-7-4 and FCC 47 Part 68

ELECTRICAL

Max voltage: 150 VAC (max)
Max current: 1.5A @ 25°C

Molex is a registered trademark of Molex, LLC in the United States of America and may be registered in other countries; all other trademarks listed herein belong to their respective owners. This information is correct at the time of publication, specifications are subject to change.

Ordering Information

Order No.	SAP No.	Description
PCD-02000-**	Consult Molex	PowerCat 6 U/UTP Patch Cord LS0H 0.5m
PCD-02001-**	Consult Molex	PowerCat 6 U/UTP Patch Cord LS0H 1m
PCD-02002-**	Consult Molex	PowerCat 6 U/UTP Patch Cord LS0H 1.5 m
PCD-02003-**	Consult Molex	PowerCat 6 U/UTP Patch Cord LS0H 2 m
PCD-02005-**	Consult Molex	PowerCat 6 U/UTP Patch Cord LS0H 3 m
PCD-02009-**	Consult Molex	PowerCat 6 U/UTP Patch Cord LS0H 5 m
PCD-02013-**	Consult Molex	PowerCat 6 U/UTP Patch Cord LS0H 7 m
PCD-02019-**	Consult Molex	PowerCat 6 U/UTP Patch Cord LS0H 10 m

Insert color code in place of ** in part number when ordering Patch Cords:
OC=Red, OE=Grey, OH=Blue, OJ=Green, OK=Yellow, OW=White, OP=Purple, ON=Orange, BK=Black